

EPSON TM Printer Driver for Mac User's Guide

Overview

Descriptions of the EPSON TM Printer Driver for mac features.

Installation

Descriptions of install and uninstall.

Using the Printer Driver

Descriptions of simple printing and useful functions.

Cautions

- No part of this document may be reproduced, stored in a retrieval system, or transmitted in any form or by any means, electronic, mechanical, photocopying, recording, or otherwise, without the prior written permission of Seiko Epson Corporation.
- The contents of this document are subject to change without notice. Please contact us for the latest information.
- While every precaution has been taken in the preparation of this document, Seiko Epson Corporation assumes no responsibility for errors or omissions.
- Neither is any liability assumed for damages resulting from the use of the information contained herein.
- Neither Seiko Epson Corporation nor its affiliates shall be liable to the purchaser of this product or third parties for damages, losses, costs, or expenses incurred by the purchaser or third parties as a result of: accident, misuse, or abuse of this product or unauthorized modifications, repairs, or alterations to this product, or (excluding the U.S.) failure to strictly comply with Seiko Epson Corporation's operating and maintenance instructions.
- Seiko Epson Corporation shall not be liable against any damages or problems arising from the use of any options or any consumable products other than those specified as Original Epson Products or Epson Approved Products by Seiko Epson Corporation.

Trademarks

EPSON is a registered trademark of Seiko Epson Corporation.

Exceed Your Vision is registered trademarks or trademarks of Seiko Epson Corporation.

Apple®, Mac®, Macintosh®, macOS®, OS X®, and Safari® are registered trademarks of Apple Inc.



All other trademarks are the property of their respective owners and used for identification purpose only.

© Seiko Epson Corporation 2019 - 2020. All rights reserved.

For Safety

Key to Symbols

The symbols in this manual are identified by their level of importance, as defined below. Read the following carefully before handling the product.

| | |
|--|---|
|  IMPORTANT | Indicates information with which you must comply when using the product. Mishandling due to ignoring this information may cause the product to fail or malfunction. |
|  NOTE | Indicates supplementary explanations and information you should know. |

Restriction of Use

When this product is used for applications requiring high reliability/safety, such as transportation devices related to aviation, rail, marine, automotive, etc.; disaster prevention devices; various safety devices, etc.; or functional/precision devices, etc., you should use this product only after giving consideration to including fail-safes and redundancies into your design to maintain safety and total system reliability. Because this product was not intended for use in applications requiring extremely high reliability/safety, such as aerospace equipment, main communication equipment, nuclear power control equipment, or medical equipment related to direct medical care, etc., please make your own judgment on this product's suitability after a full evaluation.

Contents

| | |
|----------------------------|---|
| ■ For Safety | 3 |
| Key to Symbols | 3 |
| ■ Restriction of Use | 3 |
| ■ Contents | 4 |

Overview.....5

| | |
|------------------------------|---|
| ■ System Overview..... | 5 |
| ■ Package Components | 5 |
| ■ Operating Environment..... | 5 |
| ■ Restrictions..... | 5 |

Installation6

| | |
|--|----|
| ■ Installing the Printer Driver..... | 6 |
| Installing..... | 6 |
| ■ Adding the Print Queue | 9 |
| ■ Uninstalling the Printer Driver | 13 |
| ■ Deleting the Print Queue..... | 14 |
| ■ Replacing a Printer..... | 15 |
| Replacing a Printer (USB Connection) | 15 |
| Replacing a network Printer | 15 |

Using the Printer Driver.....16

| | |
|---|----|
| ■ Setting the Print Queue | 16 |
| ■ Printer Settings in an Application..... | 18 |
| ■ Printer Network Settings | 19 |

Overview

This chapter explains the components of the EPSON TM Printer Driver for mac package and the operating environment.

System Overview

The EPSON TM Printer Driver for mac is a printer driver for the Epson TM printer. TM Print Support Library is also available as a print settings support library. For information on TM Print Support Library, see TM Printer Print Support Library Manual.

Package Components

| File | Description |
|--|-----------------------------------|
| TMPrinterInstaller_xxx.dmg | |
| TMPrinterInstaller.pkg | EPSON TM Printer Driver Installer |
| EPSON TM Printer Driver for Mac User's Guide | This guide |

Operating Environment

- macOS 10.15
- macOS 10.14
- macOS 10.13
- macOS 10.12
- OS X 10.11
- OS X 10.10.5

Restrictions

- When TextEdit is used to print, the left and right margins cannot be set to less than 1 inch (2.54 cm).
- If you need to change the IP address of the printer or other communication settings, delete the existing print queue from [Printers & Scanners] and then add the print queue again.

Installation

This chapter explains the procedures for installing and uninstalling the EPSON TM Printer Driver for mac. This manual provides explanations and instructions for a screen using macOS 10.14, TM-T20II as the TM printer, and "192.168.192.168" for the network printer IP address. Specify settings that match your actual user environment.



IMPORTANT

- Close [Printers & Scanners] in [System Preferences] before installing or uninstalling the printer driver.
- While settings are being saved, do not turn off the printer power or disconnect the printer.



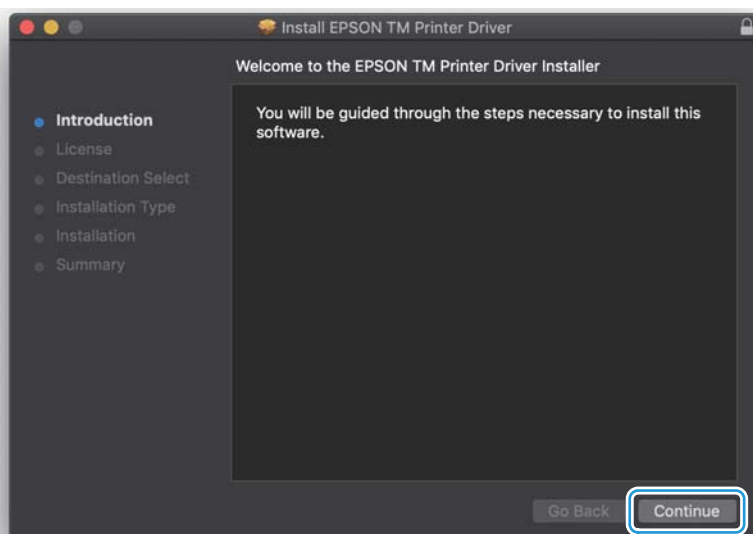
NOTE

- To install or uninstall the print driver, an administrator "Name" and "Password" is necessary.

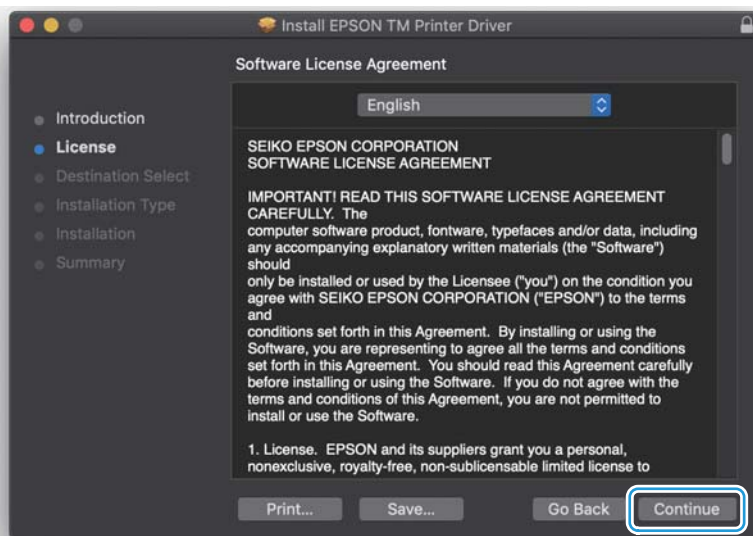
Installing the Printer Driver

Installing

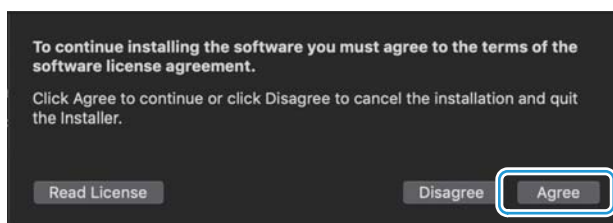
- 1** Connect the printer to the computer with an interface cable, load paper, and then turn on the printer.
If you are on an Ethernet/wireless connection, connect to the network and then turn on the printer power.
- 2** Click `TMPrinterInstaller_xxx.dmg` in the location where you saved it.
Double-click `TMPrinterInstaller.pkg` to start the installer.
- 3** The "Welcome to the EPSON TM Printer Driver for mac Installer" screen appears.
Click the [Continue] button.



- 4 The "Software License Agreement" screen appears. Check the contents and click the [Continue] button.

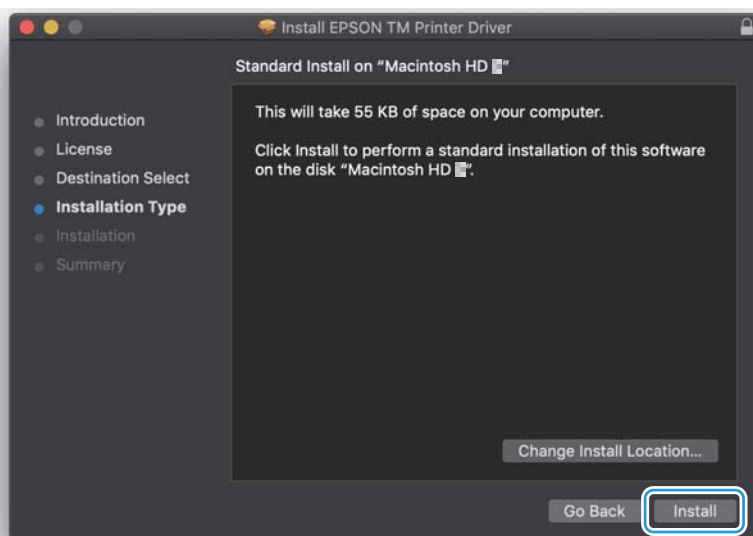


- 5 The license agreement confirmation message appears. Click the [Agree] button.



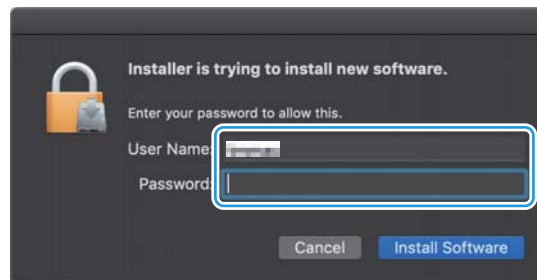
- 6 The "Select a Destination" screen optionally appears. Click the [Continue] button.

- 7 The "Standard Install on 'Macintosh HD x'" screen appears. Click the [Install] button.

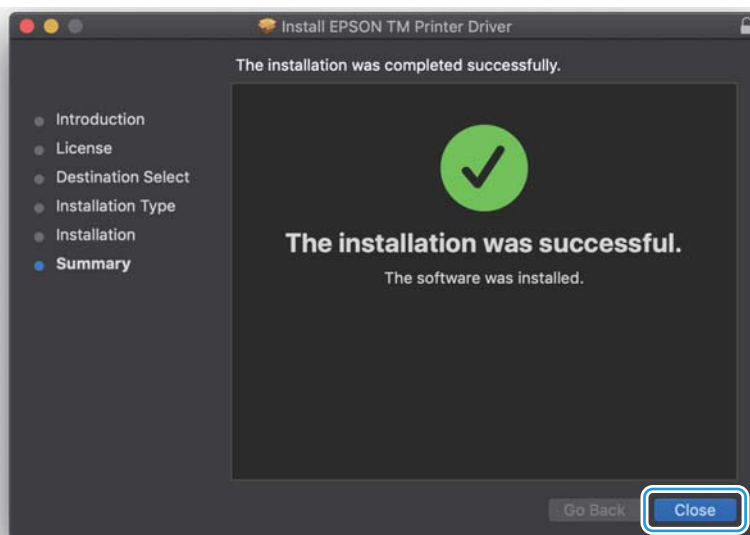


- 8** The OS administrator authentication screen appears. Enter a [Name] and [Password] and click the [Install Software] button.

Start the install.



- 9** The "The Installation was completed successfully." screen appears. Click the [Close] button.



This completes the printer driver installation. To use the printer driver to print, a print queue must be added. See ["Adding the Print Queue" on page 9](#) to add the printer.

Adding the Print Queue

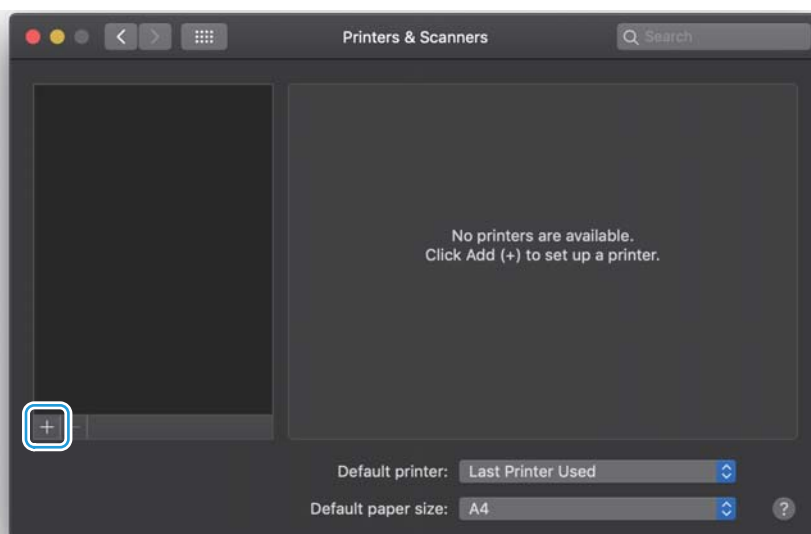
Follow the steps below to add the print queue.



NOTE

- Make sure the printer power is on while you add the print queue.
- Printer drivers are available for each printer resolution. For this reason, check the printer resolution before adding the print queue. For details, see the user's manual or Technical Reference Guide for the printer.

- 1 Select [System Preferences] - [Printers & Scanners] to open the "Printers & Scanners" screen. Click the [+] button.

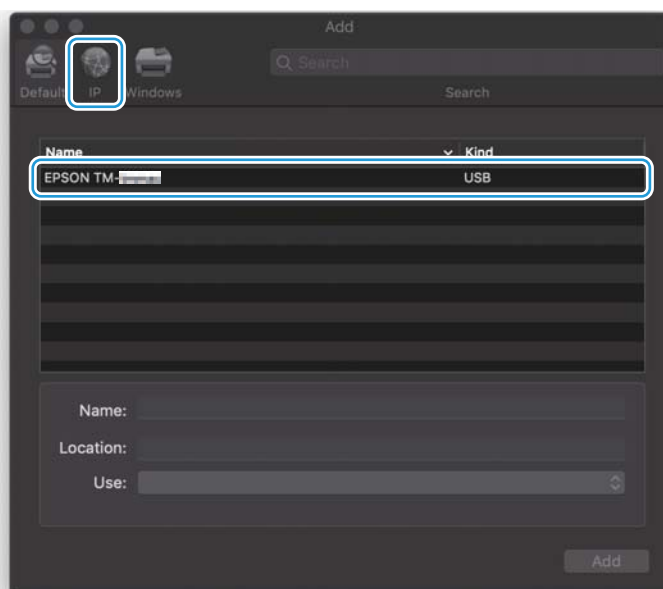


- 2 The "Add" screen appears.

If registering a printer displayed in the list, select the printer from the list and then select a printer driver from [Use] that has the same resolution as the printer. Next, execute Step 4.

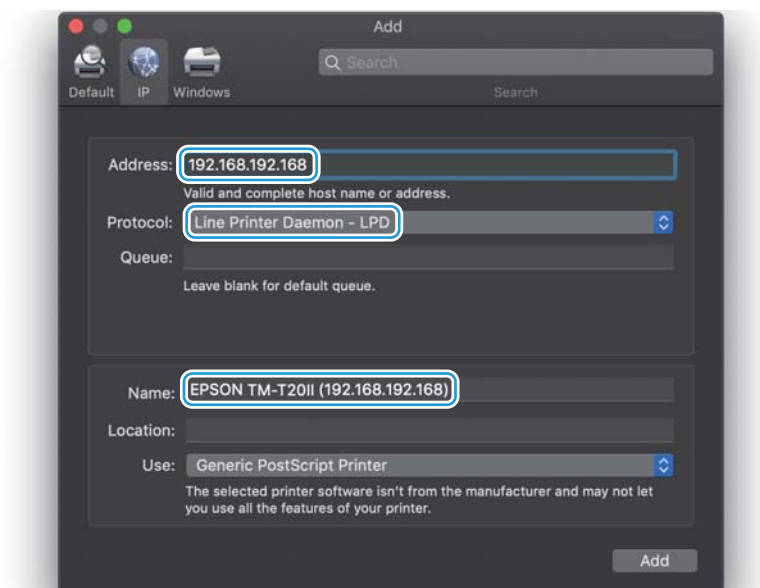
If registering a network printer, click on [IP].

If you want to add multiple printers, add the printers one by one.

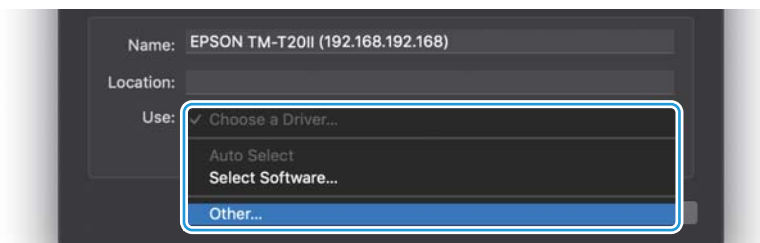


- 3** Selecting [IP] on the "Add" screen displays the IP address screen. After setting, click on [Add].

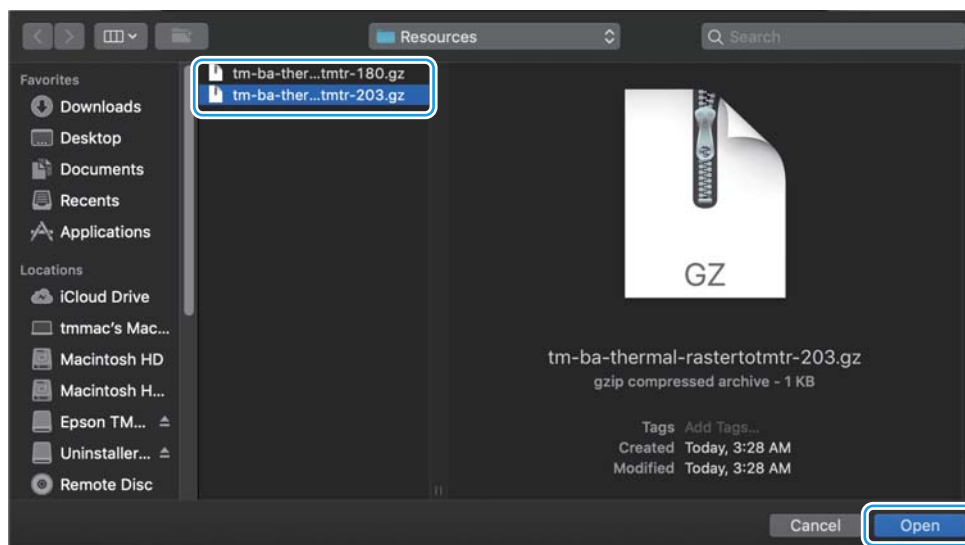
| Item | Description |
|----------|--|
| Address | Enter the IP address of the TM printer. |
| Protocol | Select [Line Printer Daemon - LPD] |
| Name | The address value is automatically entered. Edit the printer model name as necessary because it is not entered. Example: Printer name (IP address) EPSON TM-T20II (192.168.192.168) |



- 4** From [Use], select [Other].



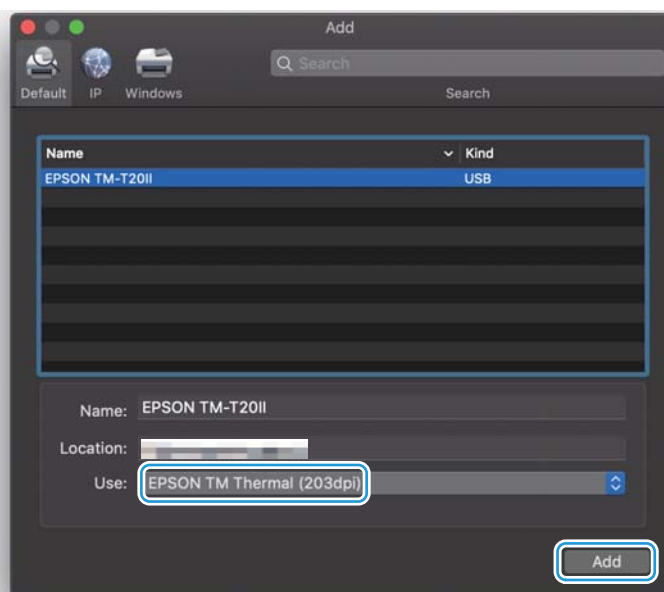
5 Select a printer driver with the same resolution as the printer, and click [Open].



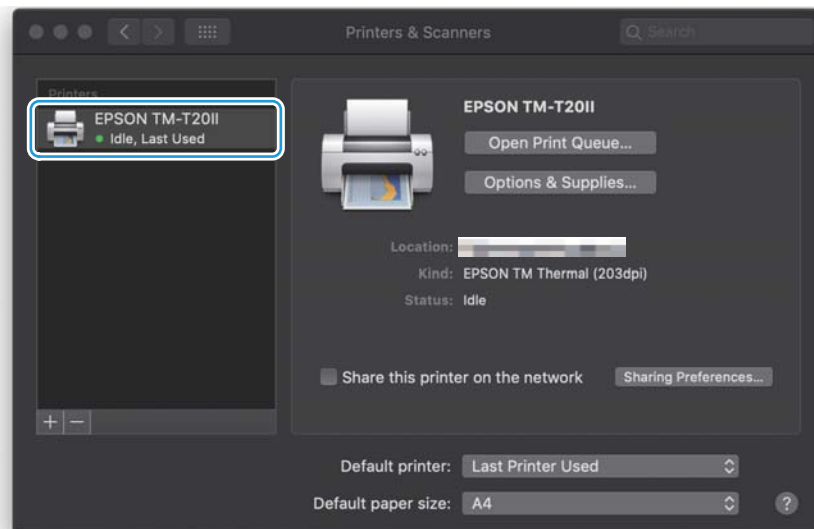
NOTE

- If the printer driver resolution does not match the printer resolution, printing will be small and shifted to the left, and print data on the right will be cut off. In such cases, check the printer resolution, and select a printer driver with the proper resolution.

6 Check that the printer driver is displayed for [Use], and then click [Add].



- 7** The "Printers & Scanners" screen appears again. The print queue is registered in the printer list.



This completes the procedure for adding the print queue.

Uninstalling the Printer Driver

Uninstall a printer driver by using the Epson standard uninstaller. Download this uninstaller separately from the printer driver.

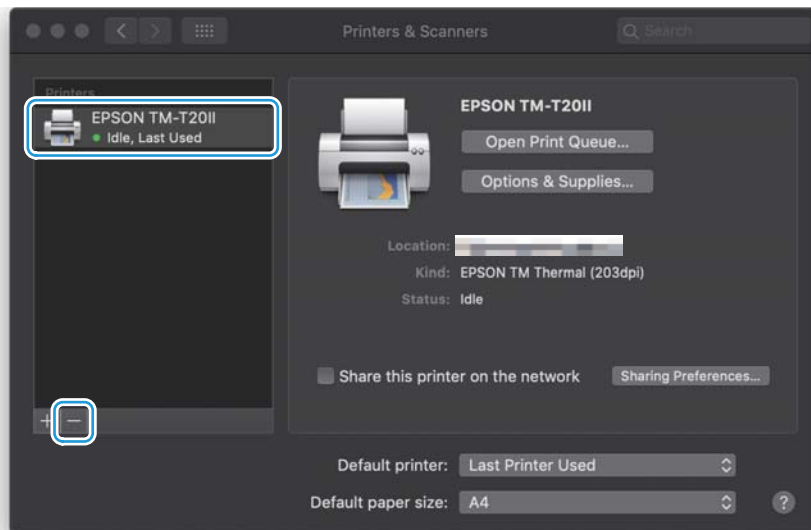
Downloaded file name: Uninstaller

Name of deleted driver: TM Printer Driver

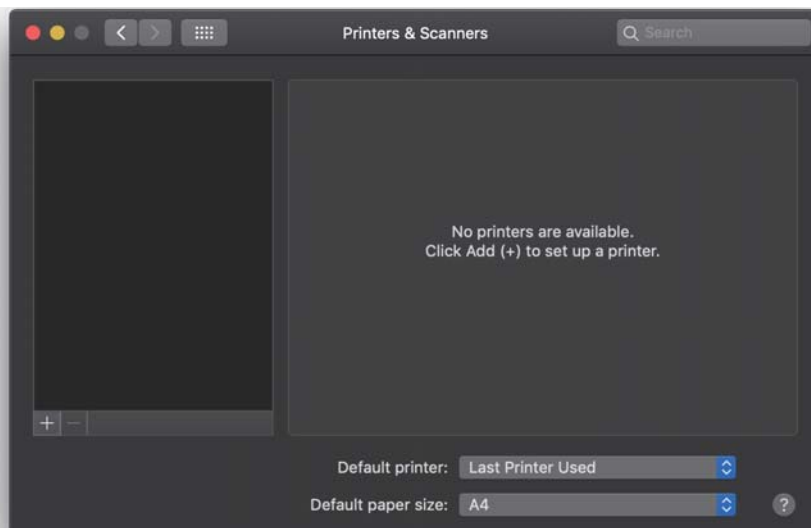
Deleting the Print Queue

The print queue remains even after the print driver is uninstalled. Follow the steps below to delete the print queue.

- 1 Select [System Preferences] - [Printers & Scanners] to open the "Printers & Scanners" screen. Select the print queue that you want to delete, and click the [-] button.



- 2 The confirmation message appears. Click the [Delete Printer] button.
- 3 The print queue is deleted from the printer list in the "Printers & Scanners" screen.



This completes the print queue deletion procedure.

Replacing a Printer

It is necessary to change the printer settings of the application if you have replaced a printer with a new one due to printer malfunction or similar cause because the OS creates a print queue for each printer.

This section explains how to replace a printer without having to change the settings of the application.

Replacing a Printer (USB Connection)

**NOTE**

Make a note of the name of the print queue of the old printer beforehand.

- 1 Delete the print queue of the old printer.**
See ["Deleting the Print Queue" on page 14.](#)
- 2 Connect the new printer and add the print queue. At this point, input the name of the print queue of the old printer for NAME.**
See ["Adding the Print Queue" on page 9.](#)

Replacing a network Printer

If replacing a network printer, you can just replace the printer IP address to replace with a new printer without having to change the printer driver settings.

Using the Printer Driver

This chapter explains how to use the main features of the printer driver.

You can specify printer driver functions from the CUPS driver that is standard equipped to the OS.

These settings are shared settings with the printer driver.

If specifying each application, you can specify each time printing by printing dialog.

Setting the Print Queue

This section explains how to set a printer driver from the print queue of the CUPS driver. This setting allows printing with the same settings from various applications.

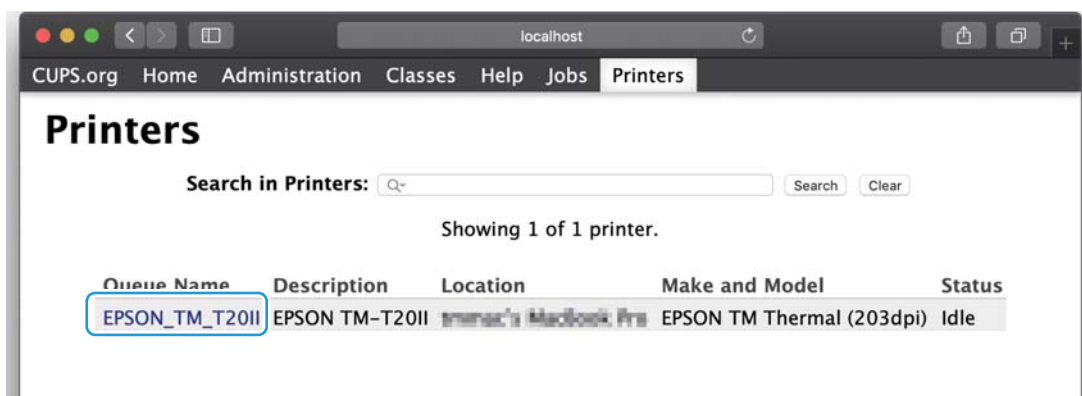
- 1 Open the browser and enter the following in the address bar.
localhost: 631

- 2 The CUPS driver is displayed. From the print queue list, select the printer to be set.

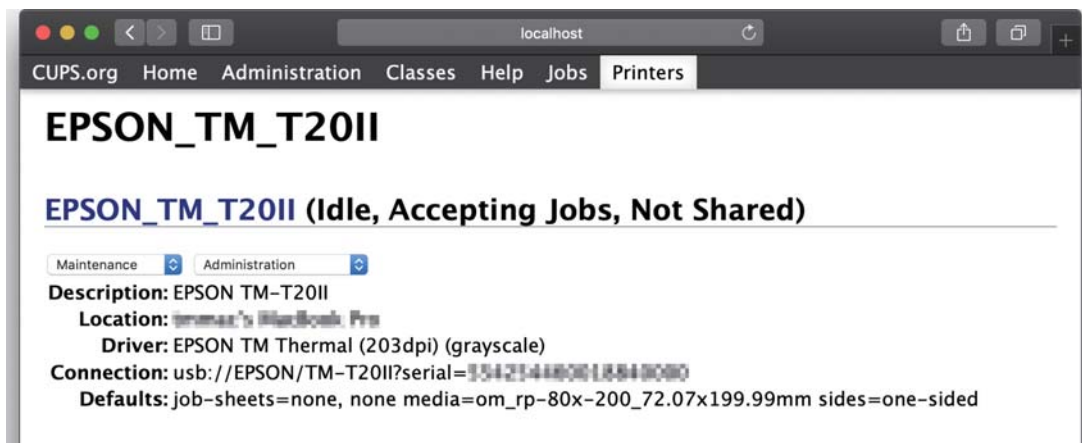


NOTE

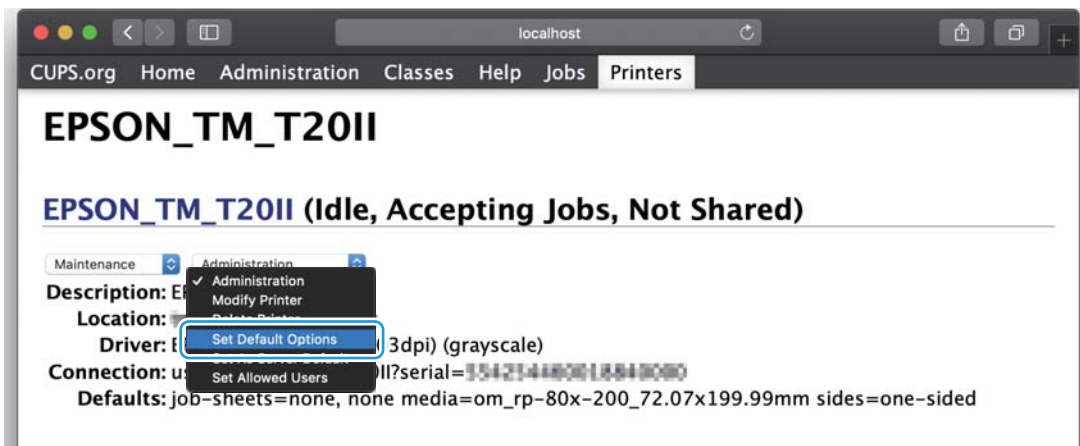
The CUPS driver is standard installed in macOS. The screen varies depending on the version of the CUPS driver.



- 3 The print queue of the selected printer is displayed.

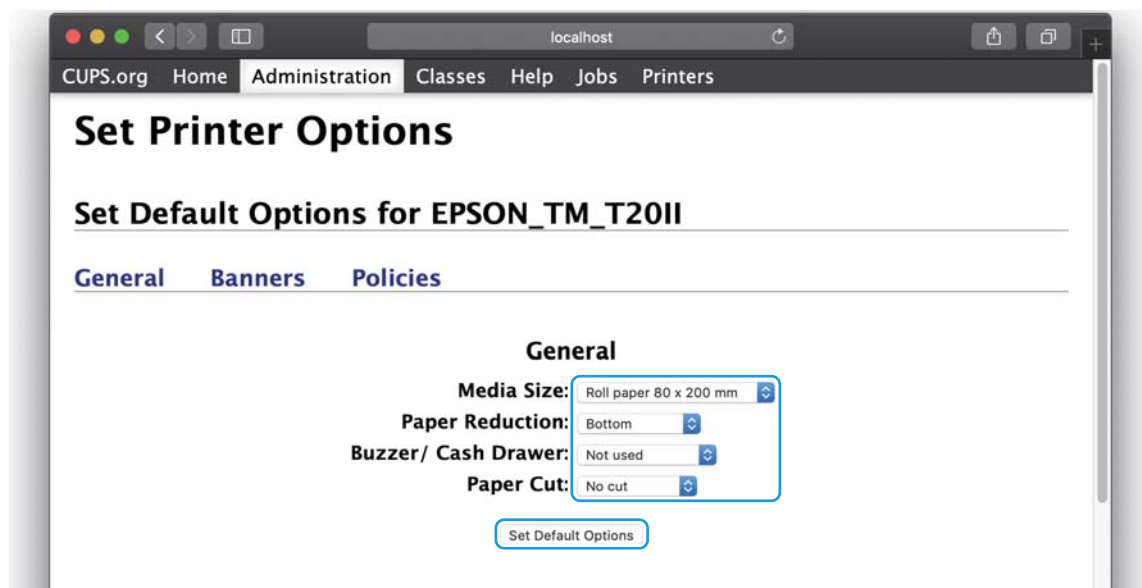


- 4 From [Administration], select [Set Default Options].



- 5 Specify the printer settings. After setting, click on [Set Default Options].

| Item | Description |
|---------------------|--|
| Media Size | Selects the media size. |
| Paper Reduction | You can reduce the margins before and after the print data. |
| Buzzer/ Cash Drawer | Sets the buzzer mounted/connected to the printer and the cash drawer connected to the printer. |
| Paper Cut | Set the paper cut. |

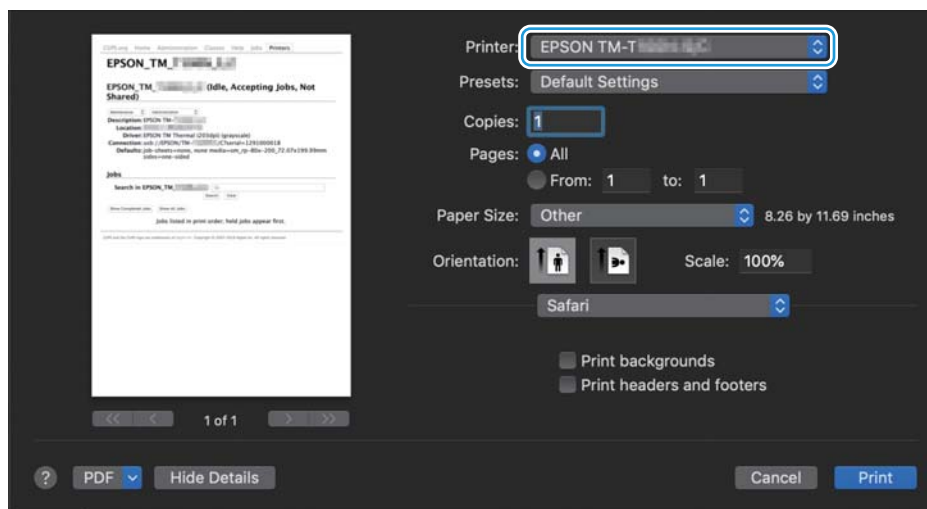


This completes setting of the print queue.

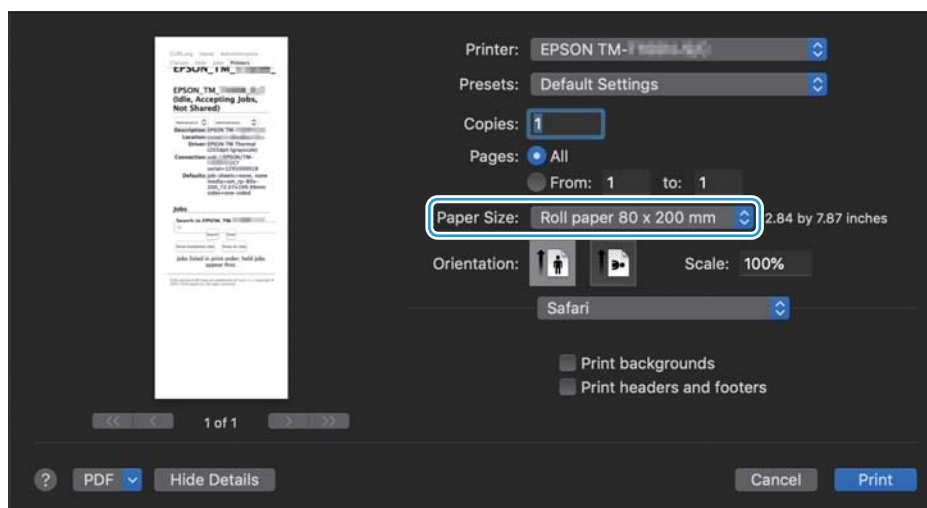
Printer Settings in an Application

The procedure for selecting the printer model and paper settings from an application is explained below. The explanation uses TextEdit as an example.

- 1 Start an application.
- 2 From the [File] menu, select [Page Setting], [Paper Setting] or similar item. An original settings screen might be displayed depending on the application software. If this occurs, see the operation manual for the application software. The printer settings screen is displayed. Select the printer.



From [Paper Size], select the media size.



Click the [Print] button. Printing starts.

Printer Network Settings

This chapter explains how to configure network settings such as the IP address of the printer.

EpsonNet Config is used to configure the network settings. (The explanations assume that Safari is used for the Web browser. If you are using a different browser, proceed as appropriate for your browser.)



IMPORTANT

When setting an IP address, make sure the IP address is not already in use for another network device or computer.

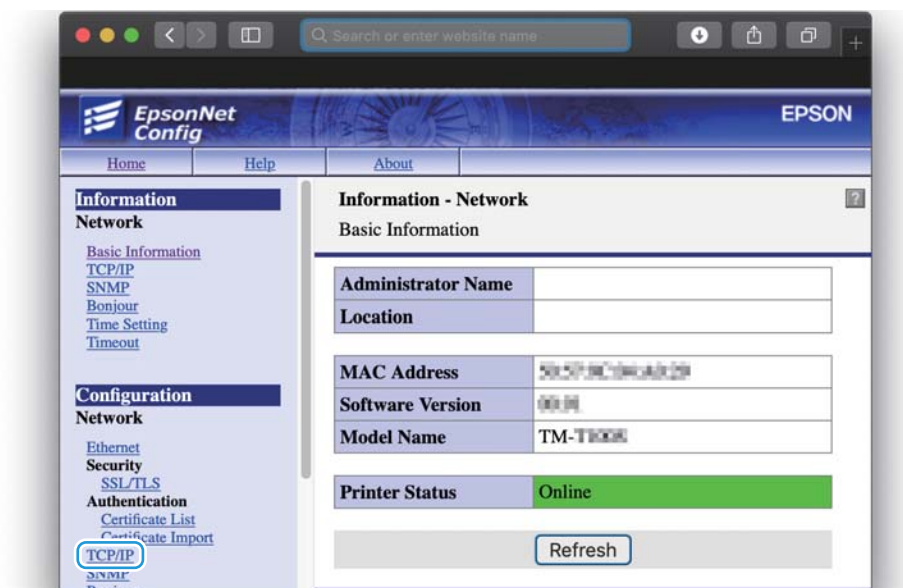
- 1** Connect the printer to the network and turn on the printer power.
- 2** Print a status sheet and check the current IP address.
To print a status sheet, hold down the push button at least 3 seconds when the printer is in the ready status.
- 3** Start your Web browser. Enter the IP address that appears in the status sheet into the address bar to start EpsonNet Config.
IP address: http://(IP address)/
- 4** The screen for inputting your [Name] and [Password] appears. Input these items, then click [Log in].



NOTE

About the initial setting of "Name" and "Password" for EpsonNet Config, refer to the printer's Technical Reference Guide.

- 5** The "Basic Information" screen appears. Click [TCP/IP] under [Configuration].



- 6** The "TCP/IP-IPv4 Address" screen appears. Configure the network settings. When finished, click the [Send] button.



| Item | Description |
|---|--------------------------|
| Acquiring the IP Address | Select [Manual]. |
| IP Address | Set the IP Address. |
| Subnet Mask | Set the Subnet Mask. |
| Default Gateway | Set the Default Gateway. |
| Set Using Automatic Private IP Addressing (APIPA) | Select [Disable]. |
| Set IP Address Using ARP + Ping | Select [Disable]. |
| IP Address Printing | Select [Disable]. |

- 7** When the network settings of the printer are changed, the following screen appears.

- 8** Turn off the printer power and then turn it back on.

- 9** In the address bar of your Web browser, enter the IP address that you set. If EpsonNet Config starts, the procedure is finished.

If EpsonNet Config does not start, check if the printer is connected to the network. Print the status sheet again and check the IP address if necessary.

This completes the procedure for configuring the network settings of the printer.